



VJHM2-06; VJH2M2-06



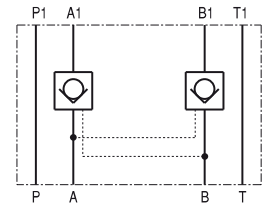
PILOT OPERATED CHECK VALVES

|KT 5041 | 01/15|

D_n 06 | p_n 32 MPa | Q_n 32 dm³/min

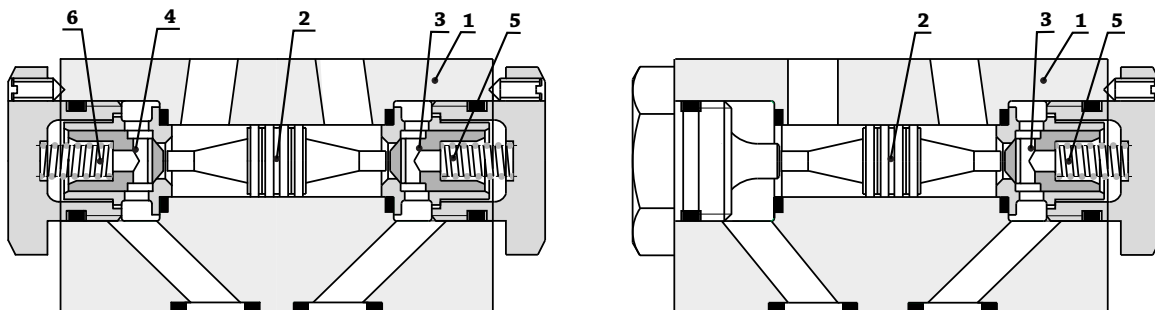
Pilot operated check valves VJH(2)M2 are designed to be used in hydraulic circuits in vertical stacking assemblies for leak free closure of one or two actuator ports during long idle periods

Installation dimensions according to DIN 24340 | ISO 4401 | CETOP 3, sandwich plate design



DESCRIPTION OF FUNCTION

Pilot operated check valves VJH(2)M2 are designed to be used in hydraulic circuits in vertical stacking assemblies for leak free closure of one or two actuator ports during long idle periods. The valve consists of the cast iron housing (1), the pilot piston (2) and one (VJHM2) or two (VJH2M2) check valves (3),(4). Fluid in the hydraulic circuit flows in A - A1 (B - B1) direction, the check valve (3),(4) opens and shifts the pilot piston (2) right (left) opening the interconnection B1 - B (A1 - A). When the pressure drop in hydraulic circuit occurs the spring (5),(6) push the poppets onto the seats and the circuit is closed. To ensure that the poppet valves seat properly, the actuator ports A and B of the directional control valve should be connected to the tank (Y).



ORDERING CODE

V J H **M 2 - 0 6 /** **- 1**

V J H Pilot operated one way check valve

no code VALVE TYPE
2 simple
double

M modular connection

2 innovation stage

1 Version
CONNECTION

A A - A1
B B - B1
C A - A1; B - B1

SIZE
06 Dn 06

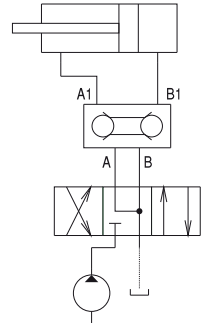




VJHM2-06; VJH2M2-06

INSTALLATION, SERVICE AND MAINTENANCE

Pilot operated check valves VJH(2)M2 can be mounted in vertical stacking assemblies in any working position respecting the valve orientation according to intended function. The fixing bolts M5 are common for whole branch of hydraulic circuit in vertical stacking assembly. Surface roughness and flatness deviation of the mounting surface shall not exceed $Ra = 1,6 \mu m$ and $0,01/100mm$. It is required that the contact surfaces must be intact before installation. All "O"-rings must not be disshaped or damaged by any means. Reliability of the valve is conditional upon use of prescribed working fluid, especially its temperature and purity.



DELIVERY

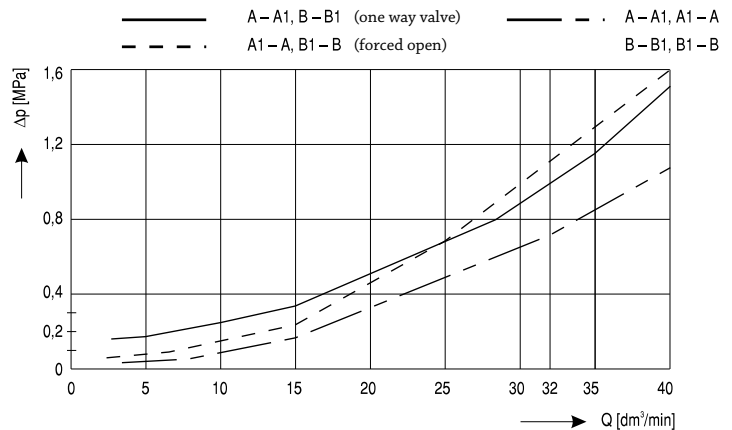
Pilot operated check valves VJH(2)M2 are delivered assembled including "O"-rings for the contact surface. Spare parts and mounting bolts are not included in the package these must be ordered separately.

TECHNICAL DATA

Technical data	Symbol	Unit	Value
Nominal size	Dn	mm	06
Nominal pressure	Pn	MPa	32
Nominal flow	Qn	dm ³ /min	32
Pressure drop $\Delta p = f(Q)$	Δp	MPa	see diagram
Opening pressure in free flow direction	p_o	MPa	0,15
Area ratio S_1/S_2			1/2,94
Hydraulic fluid viscosity range		mm ² /s	10 ... 400
Ambient temperature range	t_A	°C	-20 ... +70
Hydraulic fluid temperature range	t_{PO}	°C	-20 ... +80
Recommended hydraulic fluid	Hydraulic oils of power classes (HL, HLP) according to DIN 51524		
Maximum degree of fluid contamination	Class 21/18/15 according to ISO 4406 (1999)		
Weight	m	kg	0,89

PRESSURE DROP

Measured with temperature = $50 \pm 2^\circ C$
 Oil: HL, HLP according to DIN 51524
 presents mean values with tolerance of $\pm 10\%$

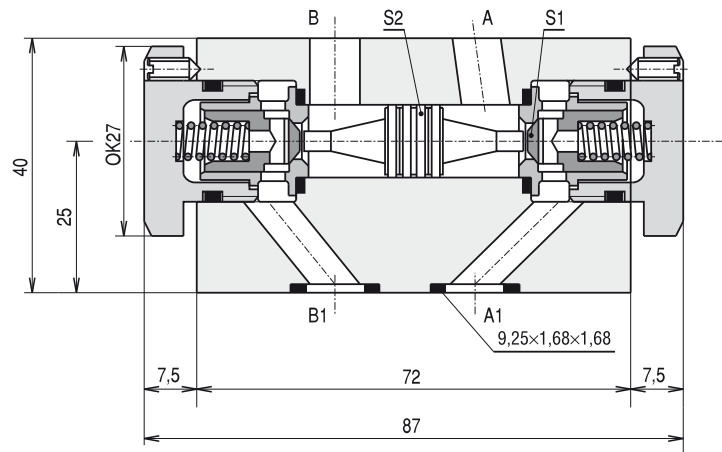




VJHM2-06; VJH2M2-06

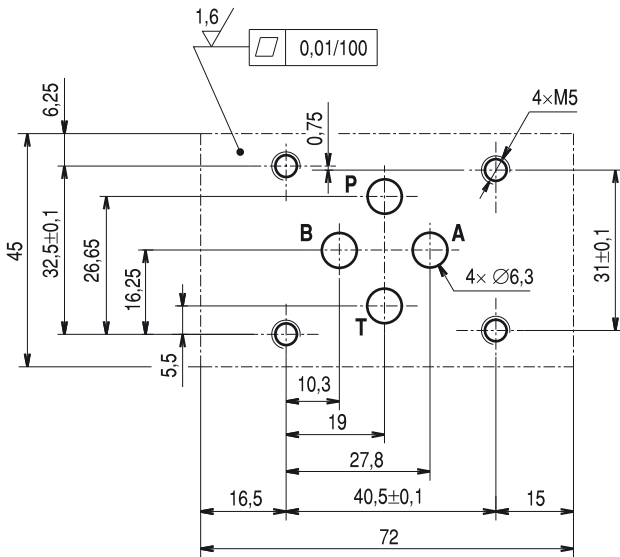
DIMENSIONS

VJH2M2-06/C-1
width 45mm



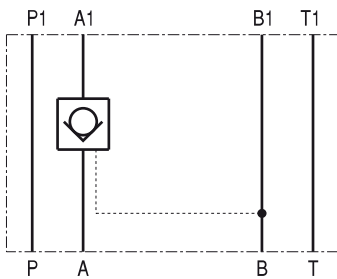
INSTALLATION DIMENSIONS

(view towards panel)

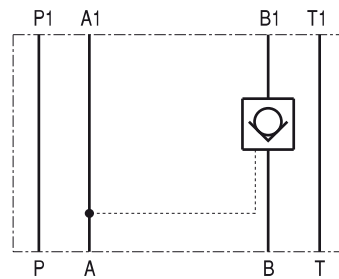


SYMBOLS OF PILOT OPERATED CHECK VALVES

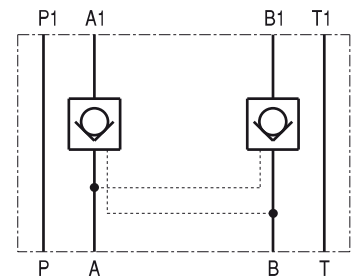
VJHM2-06/A-1



VJHM2-06/B-1



VJH2M2-06/C-1





VJHM2-06; VJHM2-06

NOTES

Consultancy service is provided by: **PQS Technology, Ltd.**

Sales department: tel.: +420 313 526 236

Technical support: tel.: +420 313 526 378

Fax: +420 313 513 091

www.pqstechnology.co.uk

e-mail: export@pqstechnology.co.uk

e-mail: info@pqstechnology.co.uk

The data is subject to change. The manufacturer reserves the right to make changes and/or improvements without prior notice. It is understood that the information in this datasheet is being used at one's own risk.

